

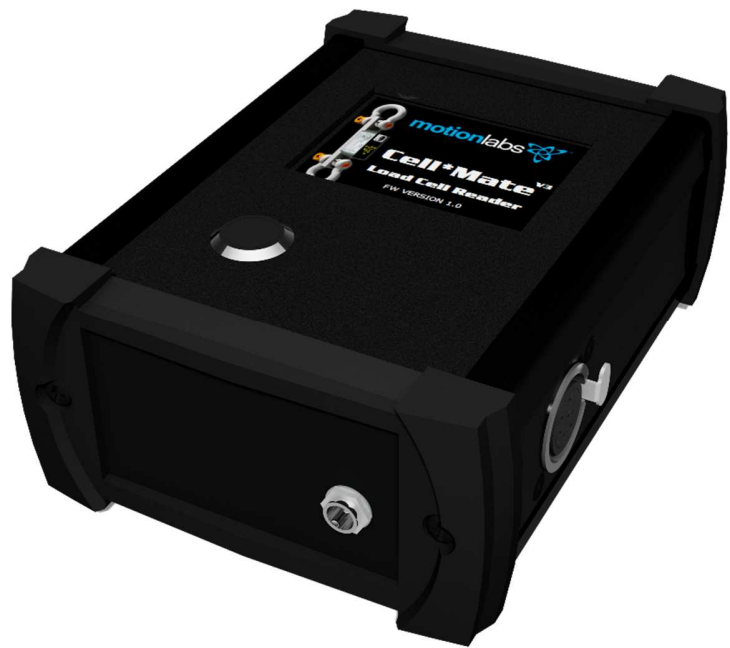
loud

V3 Load*Cell Reader

Cell*Mate System

USER MANUAL

V3 Load Cell
Reader
A-17-009-0003



This V3 Load Cell Reader is intended for professional use only
Read this entire document before installing operating or using
This V3 Load Cell Reader

■ ORIGINAL INSTRUCTIONS

Copyright 2018 © Motion Laboratories Inc.
All right reserved
Part Number: A-17-009-003-UM
Release: October 2018

Original Instructions
Cell*Mate System
Rev ORG
Released 10-2018

The reproduction, transmission or use of this document, or its contents is not permitted unless authorized in writing.
Offenders will be liable for damages.

All rights including rights created by patent grant or registration of a utility model or design are reserved.
Other functions not described in this document may be available. However, this fact shall not constitute an obligation to
supply such functions with a new product or when servicing.

We have checked that the contents of this document correspond to the device described.
There may be discrepancies nevertheless, and no guarantee can be given that they are completely identical.
The information contained in this document is reviewed regularly and any necessary changes will be included in the next
edition.

We welcome suggestions for improvement.

Motion Laboratories Inc. intends this document, whether printed or electronic, to be provided in its entirety.



1.800.227.6784 FOR MORE INFORMATION
<http://www.motionlabs.com/>

520 Furnace Dock Road . Cortlandt Manor, New York 10567 . Phone: (914)788-8877 Fax: (914)788-8866

FOREWORD

- **USER DOCUMENTATION**



WARNING

Before using the V3 Load Cell Reader you must read all safety instructions and warnings carefully including all the warning labels attached to the equipment. Make sure that the warning labels are kept in a legible condition and replace missing or damaged labels.

REGIONAL CONTACTS

Motion Laboratories Inc.

520 Furnace Dock Road,
Cortlandt Manor,
NY 10567
USA

Tel: 1.800.227.6784

Tel: +1 (914) 788-8877

Fax: +1 (914) 788-8866

www.motionlabs.com

Info@motionlabs.com

- **CENTRAL TECHNICAL SUPPORT**

Motion Laboratories Inc.

520 Furnace Dock Road,
Cortlandt Manor,
NY 10567
USA

Tel: 1.800.227.6784

Tel: +1 (914) 788-8877

Fax: +1 (914) 788-8866

www.motionlabs.com

Info@motionlabs.com

- **USE FOR INTENDED PURPOSE ONLY**

The equipment may be used only for the application stated in the manual and only in conjunction with devices and components recommended and authorized by Motion Laboratories Inc.

- **IDENTIFICATION**

This user manual pertains to
A-17-009-0003



1.800.227.6784 FOR MORE INFORMATION
<http://www.motionlabs.com/>
520 Furnace Dock Road . Cortlandt Manor, New York 10567 . Phone: (914)788-8877 Fax: (914)788-8866

TABLE OF CONTENTS

Forward 2

Table of Contents 3

Warnings 4

Overview 5

Technical Specifications 7

Installation 8

Related Components 11

Maintenance 12

Spare Parts 13

OVERVIEW

• **SYMBOLS**



DANGER

Indicates an imminently hazardous situation which, if not avoided, will result in death or serious injury.



WARNING

Indicates a potentially hazardous situation which, if not avoided, could result in death or serious injury.



CAUTION

Used with the safety alert symbol indicates a potentially hazardous situation which, if not avoided, may result in minor or moderate injury.
Used without a safety alert symbol indicates a potentially hazardous situation which, if not avoided may result in property damage.

• **DON'Ts**

- Do NOT use in wet locations or expose to moisture.
- Do NOT use batteries other than alkaline type.
- Do NOT mix old and new batteries.
- Do NOT connect any device other than V3 Load*Cells

• **GENERAL SAFETY INFORMATION**

This manual must be kept by a person in charge in a suitable place and ready for consultation, in optimal conditions. Should it be lost or damaged, the manual can easily be retrieved on the manufacturer's website: www.motionlabs.com.
The manufacturer retains all material and intellectual rights on the manual, and restricts its duplication, even partial, for any commercial use.



CAUTION

All marking data should not be removed by grinding, abrasion or peeling, whether accidental or not. Any unit that does not carry the proper identification references should be removed from service until those references can be replaced.



OVERVIEW

- **PRODUCT DEFINITION**

The V3 Load Cell Reader is a portable device that can be hand held or bench top deployed. It provides data output from any Motion Laboratories V3 load cell on an easy to read LCD touchscreen display. The unit may be battery operated or run from a 12 VDC AC wall adapter.

- **PRODUCT PERFORMANCE**

The V3 Load Cell Reader is compatible with all Motion Laboratories load cells with V3 hardware.

It provides the following functions:

- Weight readout in selectable Pounds or Kilograms

- Read and adjust offset +/- 50 pounds

- View non-volatile peak weight of the load cell (highest value measure while powered)

- Peak Hold mode displays the highest weight value while active

Power is supplied internally from 6 Alkaline AA batteries or a 12 VDC external power supply. Battery life is 14 hours or greater depending on usage.

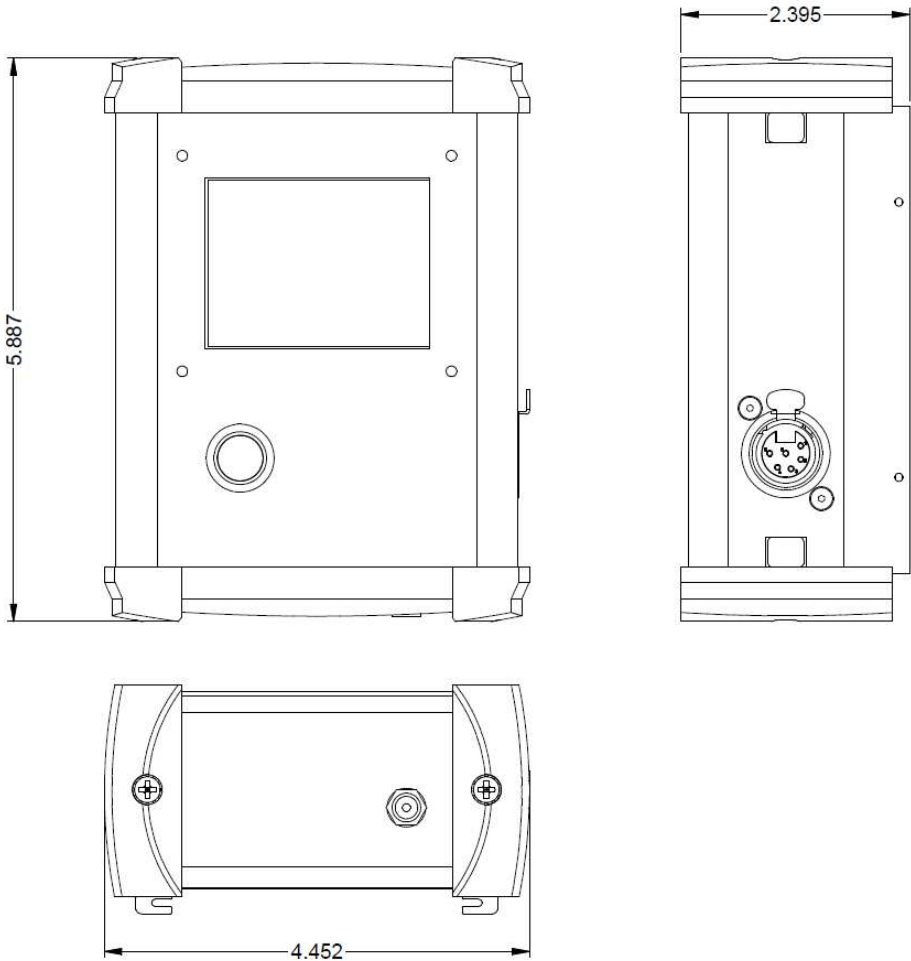
TECHNICAL SPECIFICATIONS

● **ELECTRICAL SPECIFICATIONS**

Input Power..... 9 – 12 VDC
 Current Rating.....150 mA with Load Cell
 Battery Type 6 x AA Alkaline

● **PHYSICAL SPECIFICATIONS**

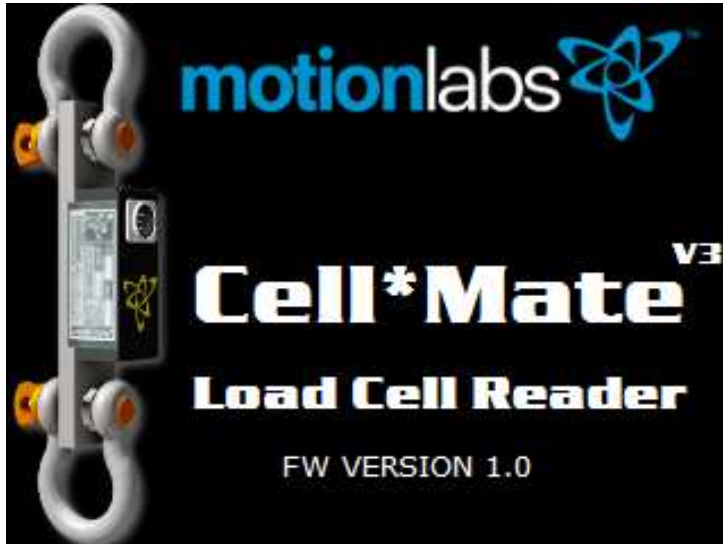
Chassis..... Aluminum Extrusion, black powder coat finish
 Front Panel..... .063" Aluminum, black powder coat finish
 End Caps..... Black Santoprene
 Chassis Width..... 4.452"
 Chassis Height.....5.887"
 Chassis Depth..... 2.395"
 Weight..... 1.5 lbs



INSTALLATION

- **OPERATION**

Turn the Load Cell Reader on by pressing the chrome hard button located on the front of the unit. After the unit is powered on the start screen appears. The product name and firmware version are displayed.



If a load cell is not connected the screen will display a Load*Cell Not Connected screen. If you do not connect a load cell within 30 seconds the reader will turn off. You can immediately turn the reader off by touching the screen.



Under normal operation connect a load cell to the 6 pin XLR connector using a male/female XLR cable 5 to 200 feet in length. You can do this before or after you power up the reader. After two seconds the load cell will display if the reader is already on. If a load cell is powered for more than 10 minutes and none of the touch screen buttons have been pressed the reader will turn off.

INSTALLATION

The top of the screen displays weight in selectable pounds or kilograms. Press the LB/KG button to change.

OFFSET is displayed in green text. This may be adjusted with the OFFSET UP and OFFSET DOWN buttons +/- 50 pounds. Pressing the OFFSET ZERO button will set OFFSET to zero. Offset is used to adjust the zero point.

PEAK WEIGHT, the highest weight the load cell measured while powered, is displayed in orange text in the lower part of the screen.

OFF button will turn the reader off.



INSTALLATION

PEAK HOLD can be toggled on and off by touching the screen in the numeric area. Weight display numerals will change to red and PEAK HOLD will appear just under the numerals. Peak hold displays the highest measured weight value while the mode is active.



RELATED PRODUCT LINE COMPONENTS

The V3 Load*Cell Reader is compatible with the following products:

V3 Load*Cell 4500 pounds (2041 kg) A-17-003-0004

V3 Load*Cell 10000 pounds (4535 kg) A-17-003-0005

V3 Load*Cell 12000 pounds (5443 kg) A-17-003-0003



V3 Shackle Pin Load*Cell 3250 kg A-17-003-0006

V3 Shackle Pin Load*Cell 4750kg A-17-003-0007



MAINTENANCE

- **BATTERY REPLACEMENT**

Replace batteries only with Six AA Alkaline cells. Avoid mixing old and new batteries.

To Replace, remove two screws on top end caps and slide face plate up to access battery holder. Observe polarity when installing batteries.

- **INSPECTIONS**

Maintenance and inspections should be carried out by competent personnel.

Check all components of system prior to operation.



SPARE PARTS

- SPARE PARTS

Only original spare parts may be used. Motion Laboratories Inc. cannot be held responsible for failures and breakdowns caused by the use of non-OEM or incorrect spare parts.

In case of necessity, please contact:

Motion Laboratories Inc.

520 Furnace Dock Road, Cortlandt Manor, NY 10567, USA

TEL: 800.277.6784 | TEL: +1 (914) 788-8877 | FAX: +1 (914) 788-8866

www.motionlabs.com