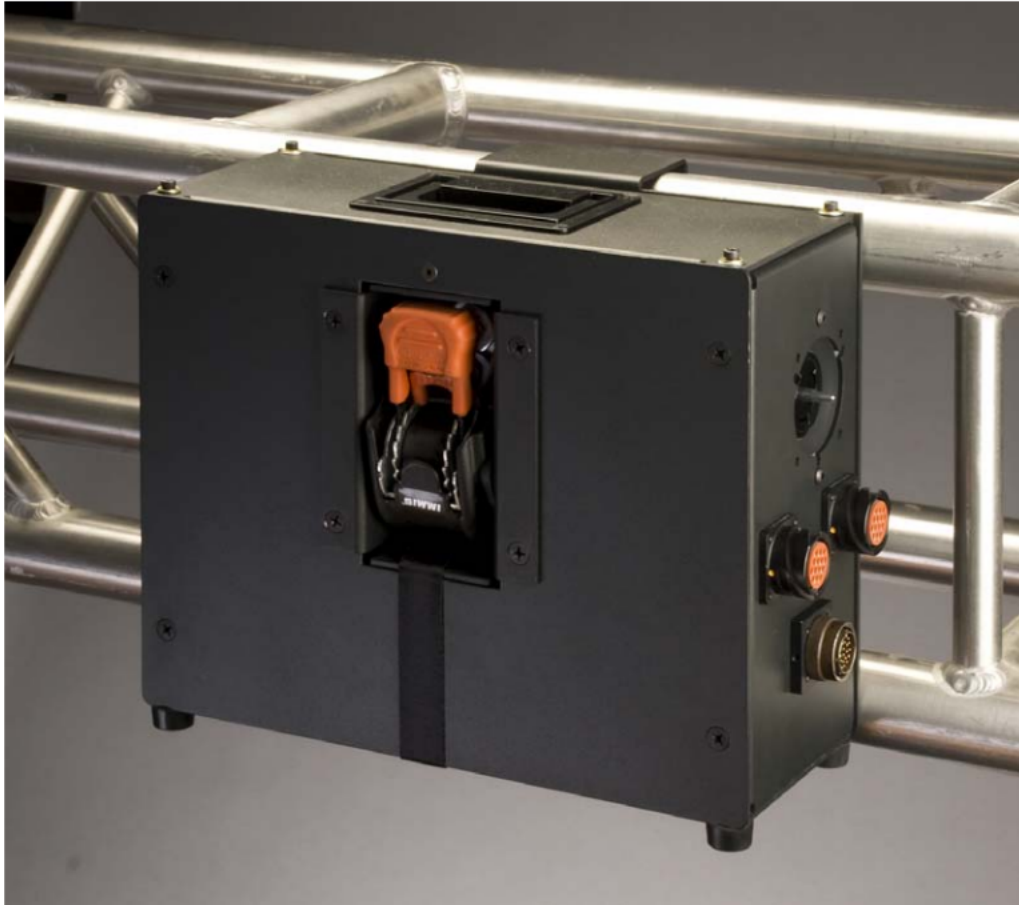


Truss Mount Control System

The Truss Mount Control System is a modular chain hoist control package, designed for flexibility, durability, and ease of deployment.



Mounting

Each unit is equipped with a truss hanging bracket and a retractable ratchet strap that will allow you to mount to your truss safely and securely. The unit is small enough that it will fit inside most truss sizes. The ratcheting strap is easy to use and fully retracts into the controller. The compact design and low profile (14"W X 12"H X 5.5"D) means that, if needed, the controller can be strapped to the inside lines of the truss and stay there during setup, show, and transport. Deployment has never been easier.

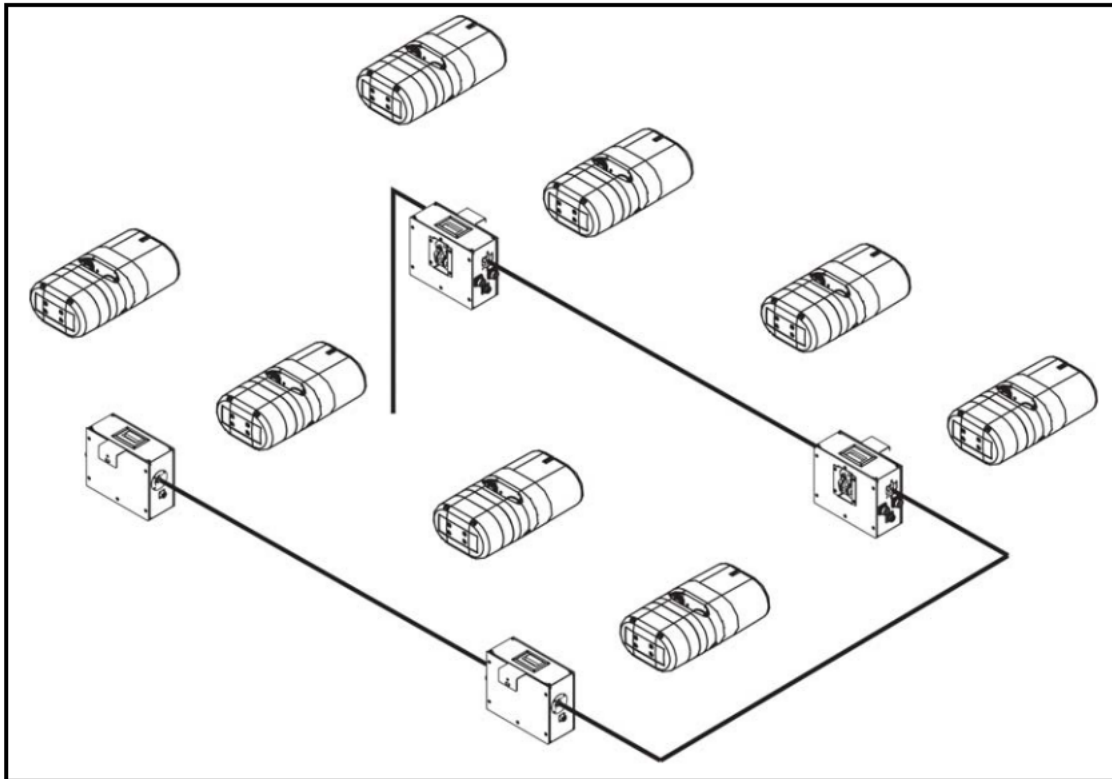
Modular

Each unit is a stand alone two channel controller that can be linked and expanded to become an eight channel control system using a standard eight channel control device. When attached to the controller, a standard eight channel control device will operate channels one and two. By linking a second unit via the control output cable, the second unit automatically becomes channels three and four. Add another unit for channels five and six. Each successive unit will operate the next two channels. The assignment of the channels is simply dependant on the order in which the controller appears in the chain. Multiple eight channel systems can be tied together with larger control devices.

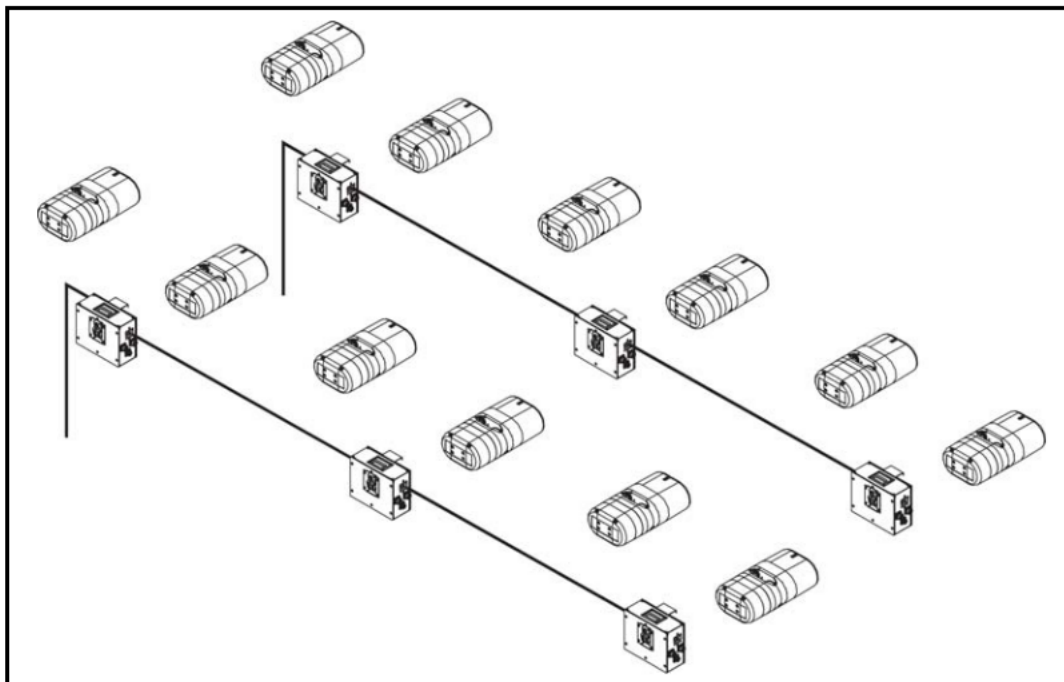
Power is everything.

- 30A or 50A Power In / Thru.
- 30A Input provides power for up to eight hoists @ 1HP.
- 50A Input provides power for up to eight hoists @ 1HP or six hoists @ 2HP.
- To increase the capacity of the system, simply add additional power input cables at appropriate points instead of using the pass thru.

Single Power Feed with a Single 8 Channel Control Device



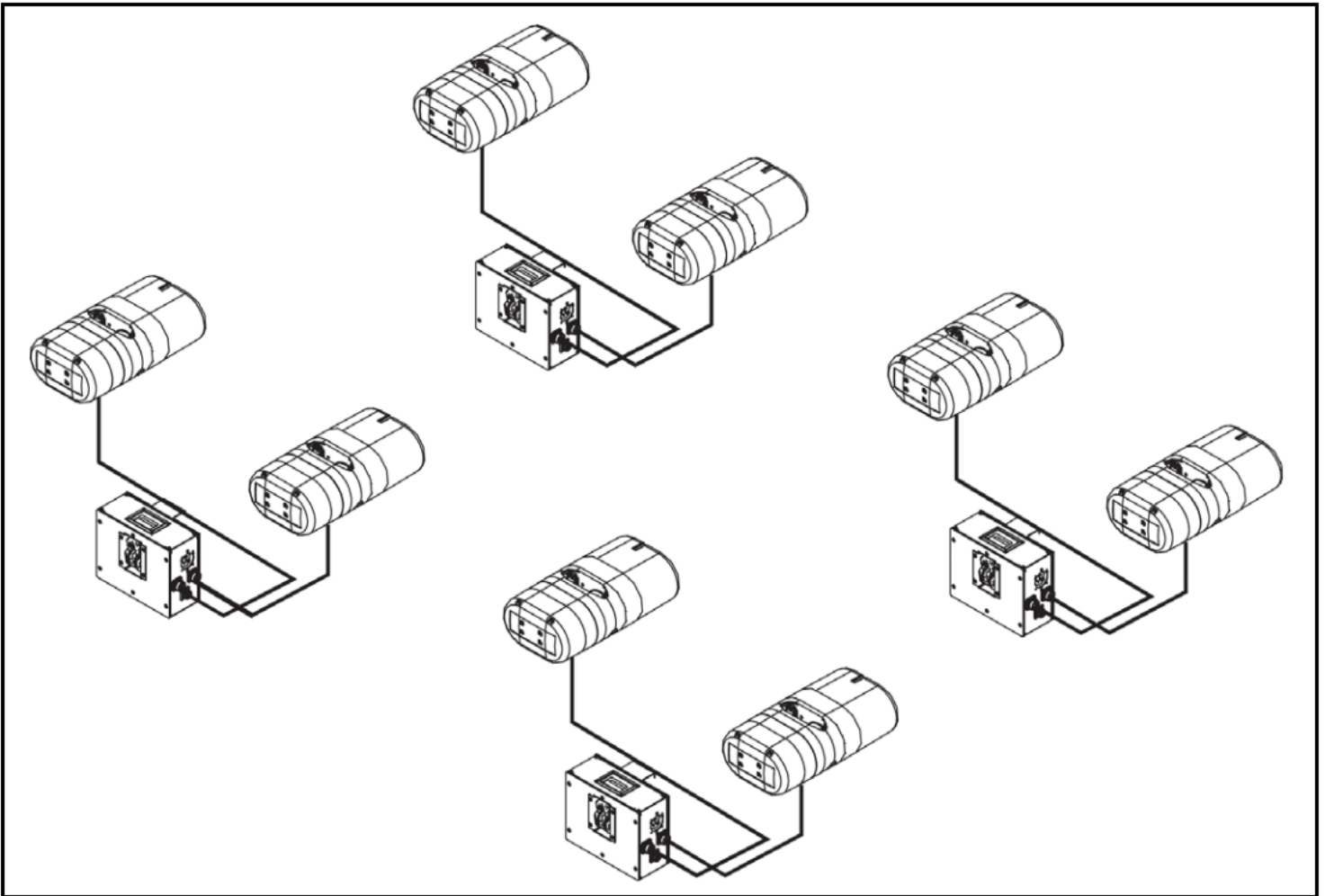
Dual Power Feeds with 2X 6 Channel Control Devices



Reduced Cable Lengths.

- The Truss Mount Control System reduces the length of hoist power and control cables.
- Each TMCS unit weighs 20.6lbs which will provide for more evenly distributed weight.
- You can install the TMCS, strap it into place, run your cables, and leave it installed for transport to the next gig.
- The flexibility of the TMCS allows you to inventory one style of controller and send out as many or as few as you need. Simple!

Short runs from the TMCS to your hoists reduces the length and cost of hoist Power and Control Cables.



<i>Model</i>	<i>Part Number</i>	<i>Power Connector</i>	<i>Circuit Protection Per Output</i>	<i>Hoist Connector</i>
A	A-1-P14	L21-30	(1) 10A CB	P-14
A	A-1-C7-30	L21-30	(1) 10A CB	C7
A	A-2-P14	L15-30	(1) 10A CB	P14
A	A-2-C7-30	L15-30	(1) 10A CB	C7
A	A-1-0900-01	L21-30	(1) 10A CB	DUAL TWIST
A	A-2-0900-01	L15-30	(1) 10A CB	DUAL TWIST
B	B-1-P14	L21-30	(2) 10A CB	P14
B	B-1-C7-30	L21-30	(2) 10A CB	C7-30
B	B-2-P14	L15-30	(2) 10A CB	P14
B	B-2-C7-30	L15-30	(2) 10A CB	C7-30
B	B-1-0900-01	L21-30	(2) 10A CB	DUAL TWIST
B	B-2-0900-01	L15-30	(2) 10A CB	DUAL TWIST
C	C-1-P14	50A 250V	(1) 10A CB	P14
C	C-1-C7-30	50A 250V	(1) 10A CB	C7-30
C	C-2-P14	50A 480V (WARNING)	(1) 10A CB	P14
C	C-2-C7-30	50A 480V (WARNING)	(1) 10A CB	C7-30
C	C-1-0900-01	50A 250V	(1) 10A CB	DUAL TWIST
C	C-2-0900-01	50A 480V (WARNING)	(1) 10A CB	DUAL TWIST
D	D-1-P14	50A 250V	(2) 10A CB	P14
D	D-1-C7-30	50A 250V	(2) 10A CB	C7-30
D	D-2-P14	50A 480V (WARNING)	(2) 10A CB	P14
D	D-2-C7-30	50A 480V (WARNING)	(2) 10A CB	C7-30
D	D-1-0900-01	50A 250V	(2) 10A CB	DUAL TWIST
D	D-2-0900-01	50A 480V (WARNING)	(2) 10A CB	DUAL TWIST